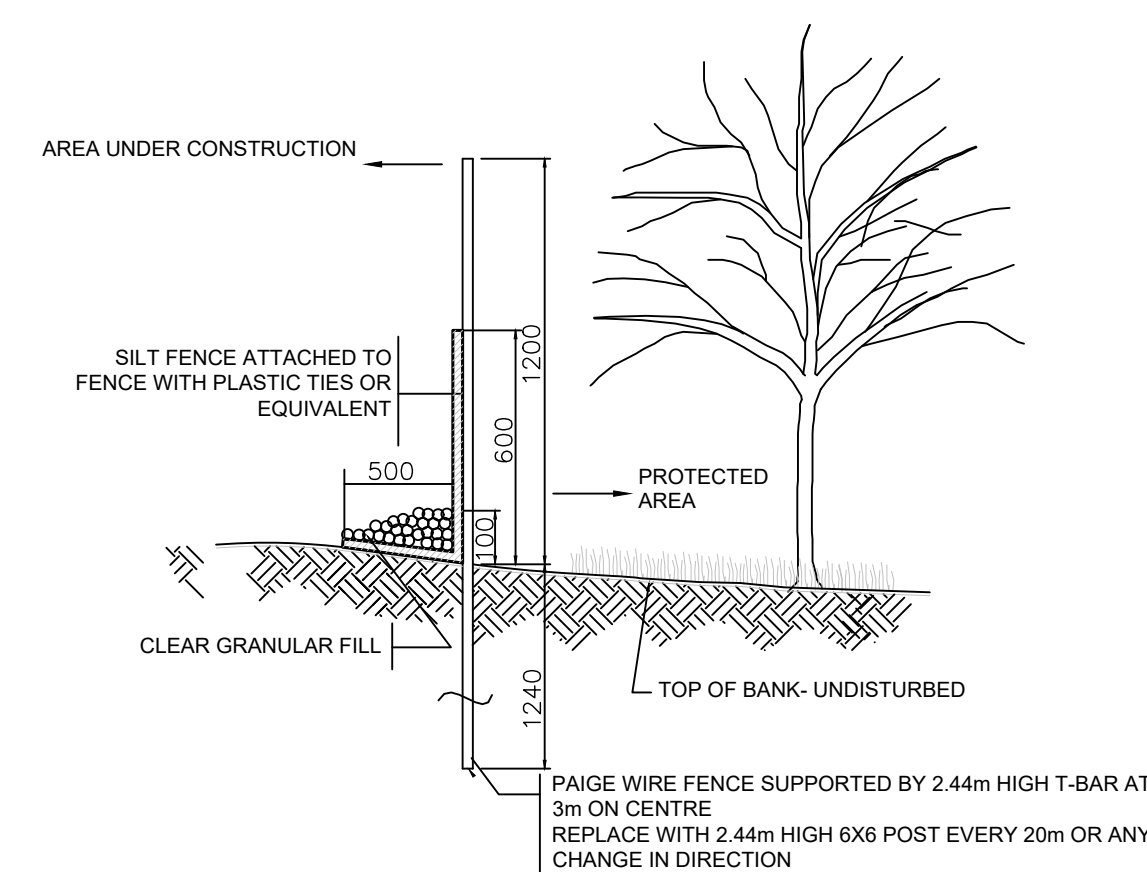


NOTES:

SITE VISIT DATE: APRIL 13, 2021

TREE INVENTORY COMPLETED BY: HILL DESIGN STUDIO.

TREE LOCATIONS AND DRILIPLINES BASED ON: SURVEY DATED JANUARY 18, 2017 AND HILL DESIGN STUDIO FIELD SURVEY.



PROJECT NO.: 2021-16	DRAWN BY: DPV
SCALE: 1:250	DESIGNED BY: AWH/DPV
SHEET:	APPROVED BY: AWH
L1	PLOT DATE: SEPT 27 21





1. PRUNE ONLY DISEASED OR DAMAGED LIMBS. DO NOT CUT LEADER

2. LONG WOOD STAKES  
3. ATTACH TO TREE  
4. NO. 14 GALV. WIRE  
5. USED WITH RUBBER  
6. GARDEN HOSE AT POINT OF  
7. CONTACT WITH TREE

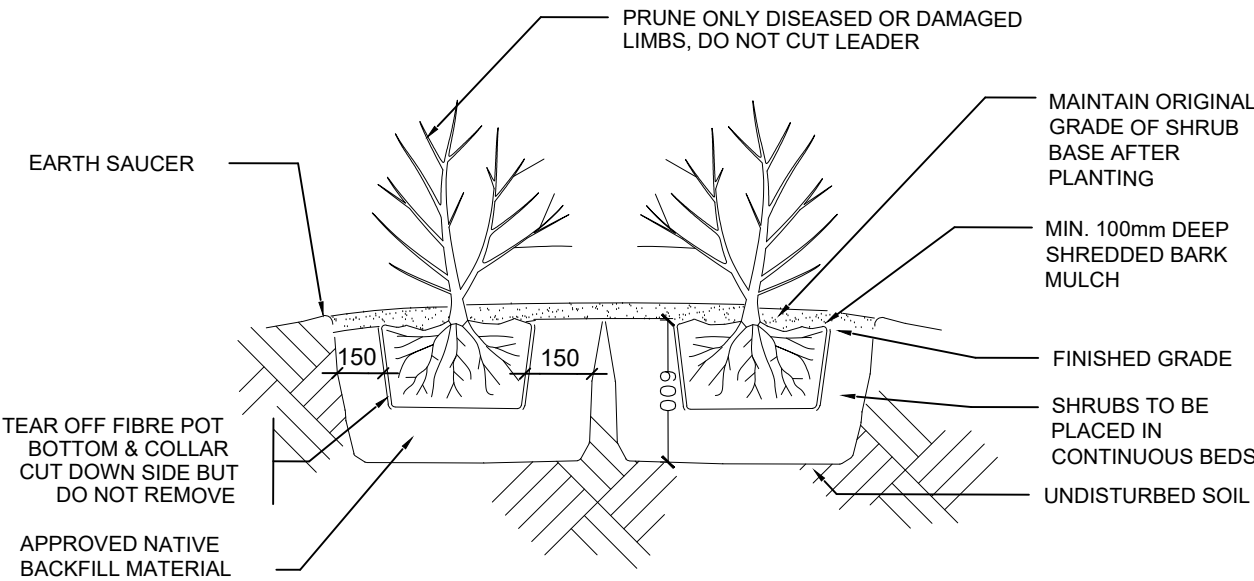
8. T-BAR STAKES ARE  
9. TO BE DRIVEN  
10. THROUGH ROOT BALL

11. INDIAN PROTECTIVE TREE GUARD,  
12. 4" HIGH

13. FINISHED GRADE

14. CUT AND REMOVE TOP  
15. 1/3 OF BURLAP, WIRE, AND TWINE

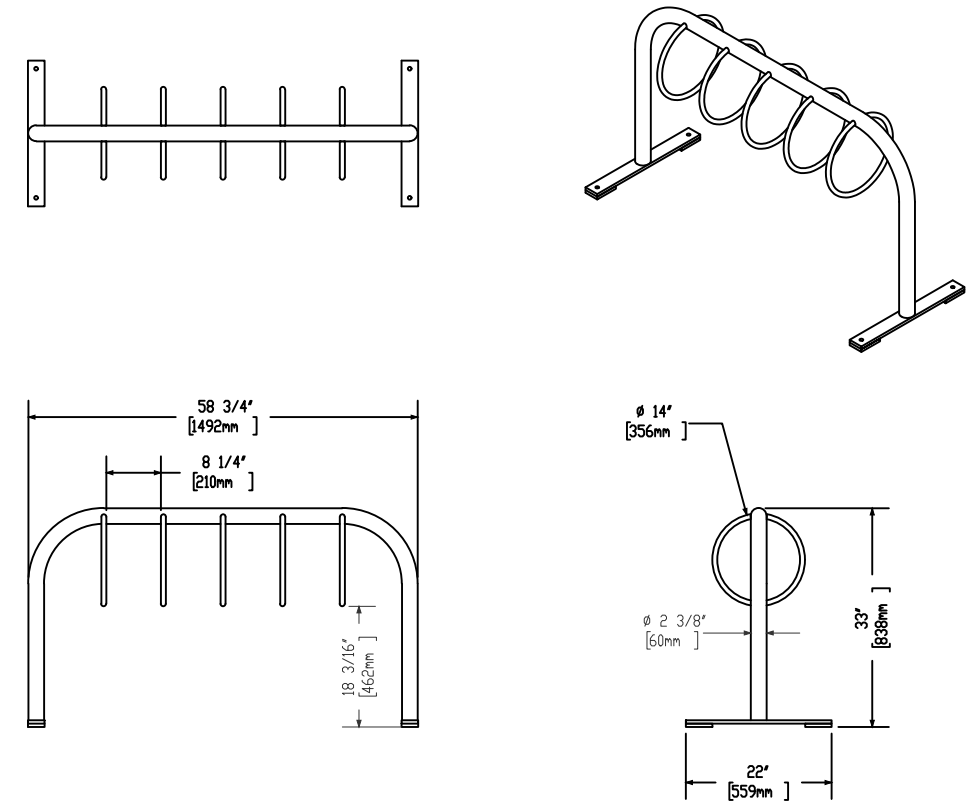
16. DISTURBED SOIL



2 SHRUB PLANTING DETAIL  
NTS

BIKE RACK BY MAGLIN  
(OR APPROVED EQUAL)  
T 1-800-716-5506  
F 1-877-260-9393  
WWW.MAGLIN.COM  
SALES@MAGLIN.COM

SPECIFICATIONS:  
MODEL: MBR300-S-S  
FINISH: BLACK POWDER COAT  
OPTIONS: NONE  
INSTALLATION: SURFACE MOUNT

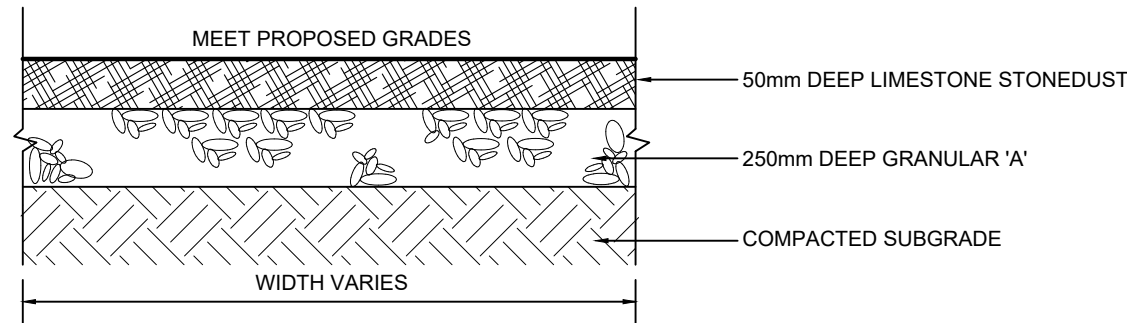
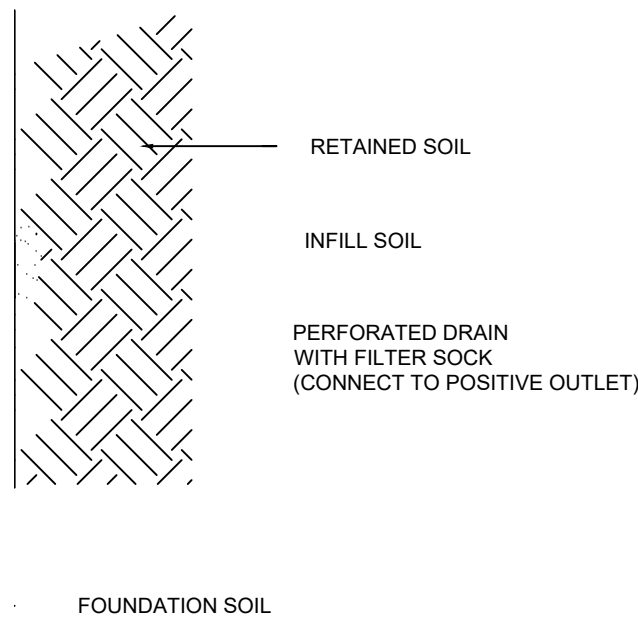


3 BIKE RACK DETAIL  
NTS

17. WALL BY UNILOCK (OR APPROVED EQUAL)

18. MEET OBC COMPLIANT GUARD AS

19. 0 TOP COURSE, TOP 3 COURSES TO BE  
20. OTHER AS REQUIRED BY MANUFACTURER.



5 STONEDUST SURFACE  
NTS



REVISIONS			
no.	date	description	by
1.	SEPT 27 21	Issued for Approval	DPV

St. Joseph Catholic Elementary School  
405 Douro 4th Line  
Lakefield, ON

Details



PROJECT NO.: 2021-16	DRAWN BY: DPV
SCALE:	DESIGNED BY: AWH/DPV
SHEET:	APPROVED BY: AWH
L3	PLOT DATE: SEPT 27 21