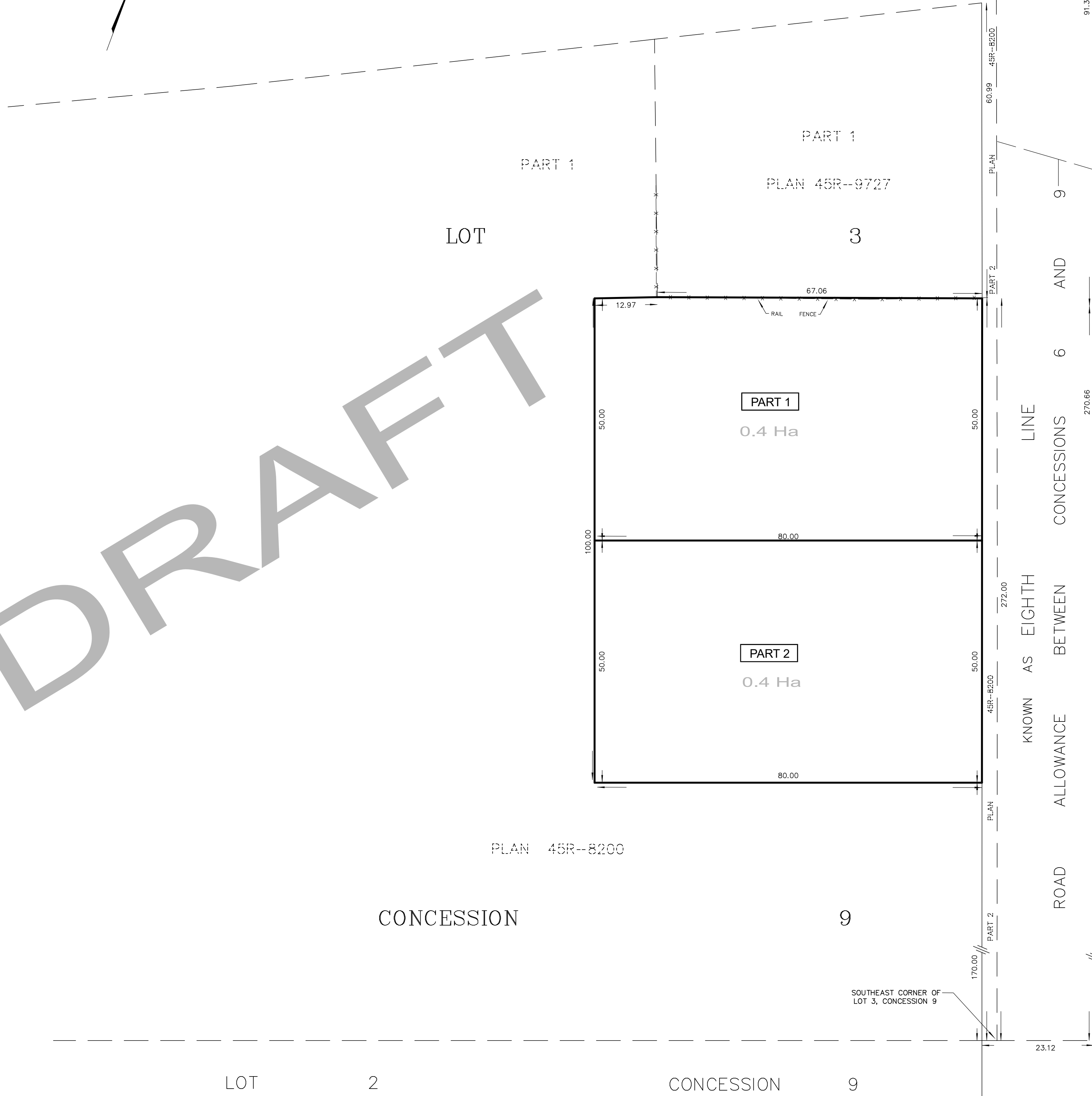
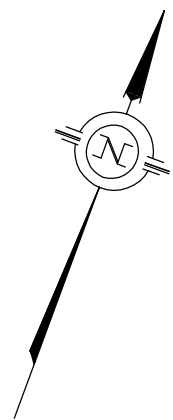


METRIC: DISTANCES AND COORDINATES SHOWN HEREON ARE IN METRES  
CAN BE CONVERTED TO FEET BY DIVIDING BY 0.3048



SCHEDULE				
PART	LOT	CONCESSION/PLAN	PIN	AREA
1	PART OF LOT 3	9	XXXXXXXXXXXX	0.4 Hect.
2	PART OF LOT 3	9	XXXXXXXXXXXX	0.4 Hect.

PLAN OF SURVEY OF  
PART OF LOT 3  
CONCESSION 9  
GEOGRAPHIC TOWNSHIP OF DOURO  
TOWNSHIP OF DOURO-DUMMER  
COUNTY OF PETERBOROUGH



SCALE: 1:500

THE INTENDED PLOT SIZE OF THIS PLAN IS 860mm IN WIDTH BY 560mm IN HEIGHT  
WHEN PLOTTED AT A SCALE OF 1:500

SURVEYOR'S CERTIFICATE

I CERTIFY THAT:

- THIS SURVEY AND PLAN ARE CORRECT AND ARE IN ACCORDANCE WITH THE SURVEYS ACT, THE SURVEYORS ACT AND THE LAND TITLES ACT AND THE REGULATIONS MADE UNDER THEM.
- THE SURVEY WAS COMPLETED ON XXXXXX XX, 2021

SIGNED AT LAKEFIELD, ONTARIO  
THIS XXTH DAY OF XXXXXX, 2021

CHRISTOPHER E. MUSCLOW  
ONTARIO LAND SURVEYOR

"THIS PLAN OF SURVEY IS RELATED TO AOLS PLAN SUBMISSION FORM NUMBER (insert number)."

LEGEND

- . . . . . DENOTES SURVEY MONUMENT FOUND
- . . . . . DENOTES SURVEY MONUMENT PLANTED
- WIT . . . . . DENOTES WITNESS
- E&P . . . . . DENOTES ELLIOTT & PARR, O.L.S.
- 873 . . . . . DENOTES W.A. BENINGER, O.L.S.
- 712 . . . . . DENOTES G.W. ELLIOTT, O.L.S.

BEARINGS SHOWN HEREON ARE UTM GRID, DERIVED FROM REAL TIME NETWORK (RTN) OBSERVATIONS ON POINTS A AND B LISTED HEREON AND ARE REFERRED TO THE CENTRAL MERIDIAN OF UTM ZONE 17 (81° WEST LONGITUDE) NAD 83 (CSRS EPOCH 1997.0).

FOR BEARING COMPARISONS, A ROTATION OF XXXXXXXXXX COUNTER CLOCKWISE WAS APPLIED TO BEARINGS SHOWN ON PLAN XXXXXXXXXX

DISTANCES SHOWN HEREON ARE GROUND DISTANCES AND CAN BE USED TO COMPUTE GRID DISTANCES BY MULTIPLYING BY A COMBINED SCALE FACTOR OF XXXXXXXXXX

INTEGRATION DATA

COORDINATES ARE DERIVED FROM GPS RTK OBSERVATIONS USING THE SMARTNET CORRECTION DATA AND ARE REFERRED TO UTM ZONE 17 (81°W LONGITUDE) NAD83 (CSRS EPOCH 1997.0).		
OBSERVED REFERENCE POINT (ORP) COORDINATE VALUES ARE TO 'RURAL' ACCURACY SPECIFICATION IN ACCORDANCE WITH SEC. 14(2) OF O.REG. 216/10		
POINT	UTM NORTHING	UTM EASTING
ORP (A)	XXXXXXXXXX	XXXXXXXXXX
ORP (B)	XXXXXXXXXX	XXXXXXXXXX
CAUTION: COORDINATES CANNOT, IN THEMSELVES, BE USED TO RE-ESTABLISH CORNERS OR BOUNDARIES SHOWN ON THIS PLAN.		



JBF SURVEYORS  
3177 LAKEFIELD RD., BOX 70  
LAKEFIELD, ON K0L 2H0  
PHONE: 705-652-6198  
INFO@JBFSURVEYORS.COM  
WWW.JBFSURVEYORS.COM

PROJ. # 9001RP