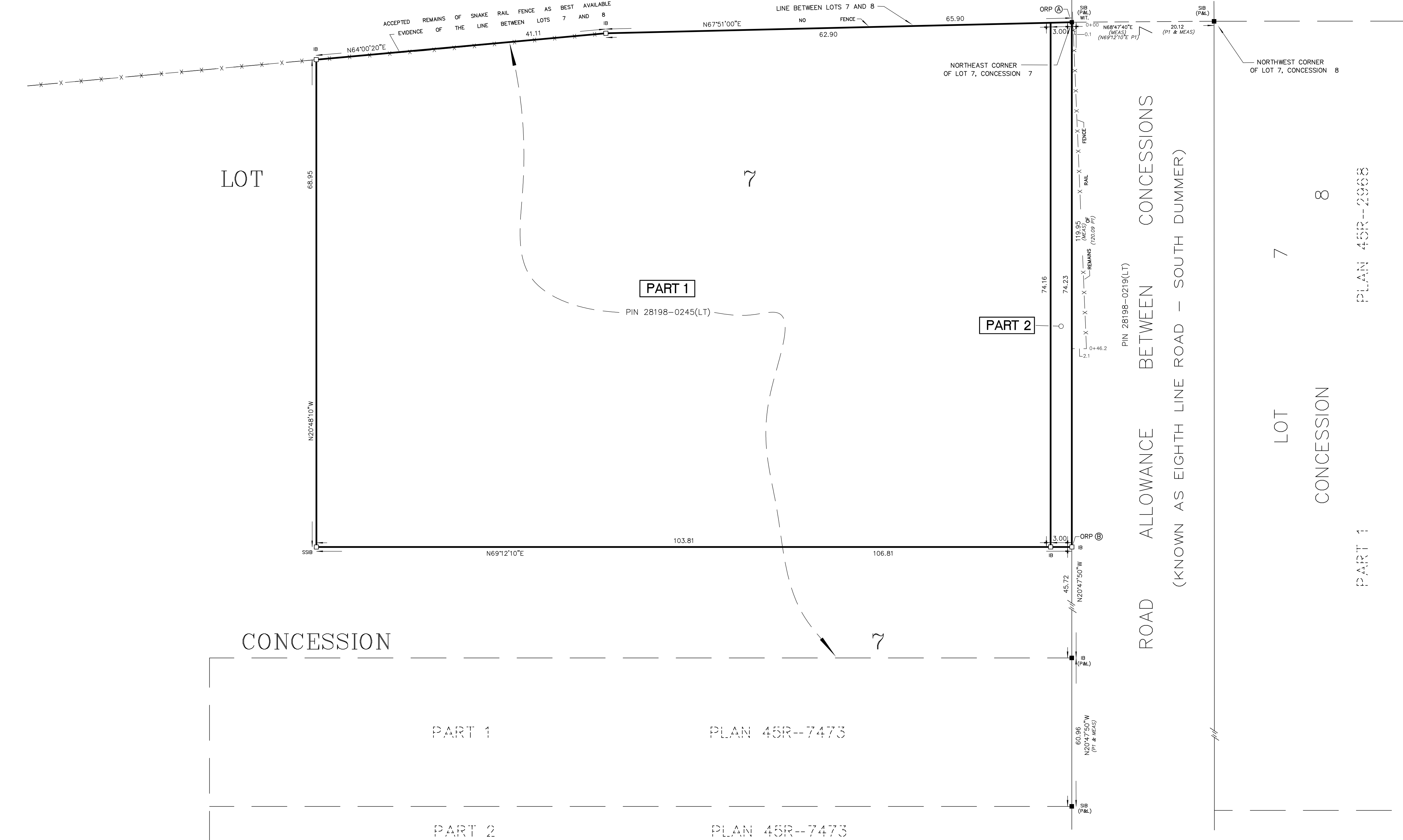
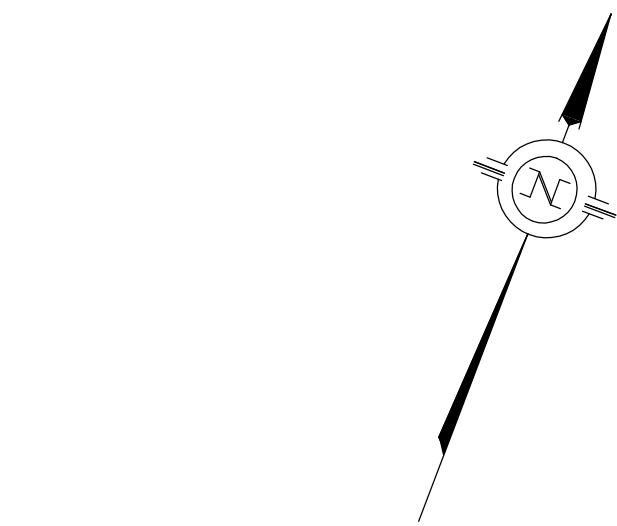


METRIC: DISTANCES AND COORDINATES SHOWN HEREON ARE IN METRES
CAN BE CONVERTED TO FEET BY DIVIDING BY 0.3048



SCHEDULE				
PART	LOT	CONCESSION	PIN	AREA
1	PART OF LOT 7	7	PART OF PIN 28198-0245	7515.14 sq. m.
2	PART OF LOT 7	7	PART OF PIN 28198-0245	222.58 sq. m.

PLAN OF SURVEY OF
PART OF LOT 7
CONCESSION 7
GEOGRAPHIC TOWNSHIP OF DUMMER
TOWNSHIP OF DOURO-DUMMER
COUNTY OF PETERBOROUGH

5 0 10 20 30

SCALE: 1:300

THE INTENDED PLOT SIZE OF THIS PLAN IS 860mm IN WIDTH BY 560mm IN HEIGHT
WHEN PLOTTED AT A SCALE OF 1:300

SURVEYOR'S CERTIFICATE

- I CERTIFY THAT:
- THIS SURVEY AND PLAN ARE CORRECT AND ARE IN ACCORDANCE WITH THE SURVEYS ACT, THE SURVEYORS ACT AND THE LAND TITLES ACT AND THE REGULATIONS MADE UNDER THEM.
 - THE SURVEY WAS COMPLETED ON AUGUST 9, 2021

SIGNED AT LAKEFIELD, ONTARIO
THIS 18TH DAY OF AUGUST, 2021

CHRISTOPHER E. MUSCLOW
ONTARIO LAND SURVEYOR

THIS PLAN OF SURVEY IS RELATED TO AOLS PLAN SUBMISSION FORM NUMBER 2164972

LEGEND

- DENOTES SURVEY MONUMENT FOUND
- DENOTES SURVEY MONUMENT PLANTED
- WIT DENOTES WITNESS
- P&L DENOTES PIERCE & LYONS, O.L.S.
- P1 DENOTES PLAN 45R-7473

BEARINGS SHOWN HEREON ARE UTM GRID, DERIVED FROM REAL TIME NETWORK (RTN) OBSERVATIONS ON POINTS A AND B LISTED HEREON AND ARE REFERRED TO THE CENTRAL MERIDIAN OF UTM ZONE 17 (81° WEST LONGITUDE) NAD 83 (CSRS EPOCH 2010.0).

FOR BEARING COMPARISONS, A ROTATION OF 2°06'50" COUNTER CLOCKWISE WAS APPLIED TO BEARINGS SHOWN ON P1

DISTANCES SHOWN HEREON ARE GROUND DISTANCES AND CAN BE USED TO COMPUTE GRID DISTANCES BY MULTIPLYING BY A COMBINED SCALE FACTOR OF 1.00025531

INTEGRATION DATA

COORDINATES ARE DERIVED FROM GPS RTK OBSERVATIONS USING THE SMARTNET CORRECTION DATA AND ARE REFERRED TO UTM ZONE 17 (81°W LONGITUDE) NAD83 (CSRS EPOCH 2010.0).		
OBSERVED REFERENCE POINT (ORP) COORDINATE VALUES ARE TO 'RURAL' ACCURACY SPECIFICATION IN ACCORDANCE WITH SEC. 14(2) OF O. REG. 216/10		
POINT	UTM NORTHING	UTM EASTING
ORP A	4923901.71	736950.96
ORP B	4923832.32	736977.31
CAUTION: COORDINATES CANNOT, IN THEMSELVES, BE USED TO RE-ESTABLISH CORNERS OR BOUNDARIES SHOWN ON THIS PLAN.		

JBF SURVEYORS
3177 LAKEFIELD RD., BOX 70
LAKEFIELD, ON K0L 2H0
PHONE: 705-652-6198
INFO@JBFSURVEYORS.COM
WWW.JBFSURVEYORS.COM

PROJ. # 8075