

SCHEDULE				
PART	LOT	CONCESSION	PIN	AREA (m ²)
1				3443.7
2				449.9
3				156.4
4	PART OF 4	6	PART OF 28200-0084	135.4
5				134.3
6				691.6
7				502.4
8				25,678.0

PLAN OF SURVEY OF
**PART OF LOT 4,
 CONCESSION 6**
 GEOGRAPHIC TOWNSHIP OF DUMMER
TOWNSHIP OF DOURO-DUMMER
 COUNTY OF PETERBOROUGH

SCALE 1 : 750 METRES

THE INTENDED PLOT SIZE OF THIS PLAN IS
 610MM IN WIDTH BY 914MM IN HEIGHT WHEN
 PLOTTED AT A SCALE OF 1:750

- LEGEND**
- DENOTES SURVEY MONUMENT FOUND
 - DENOTES SURVEY MONUMENT SET
 - SSIB DENOTES SHORT STANDARD IRON BAR
 - SIB DENOTES STANDARD IRON BAR
 - IB DENOTES IRON BAR
 - WT DENOTES WITNESS
 - 1233 DENOTES GORDON F. JONES LTD., O.L.S.
 - POU DENOTES UTILITY POLES
 - AN DENOTES ANCHOR
 - DH- DENOTES OVERHEAD WIRES
 - SSIBs SET DUE TO LACK OF OVERBURDEN.

BEARING NOTES
 BEARINGS ARE UTM GRID, DERIVED FROM OBSERVED REFERENCE
 POINTS A AND B, BY REAL TIME NETWORK OBSERVATIONS, UTM
 ZONE 17 (81° WEST LONGITUDE), NAD83(CSR5)7(2010).

DISTANCE NOTES - METRIC
 DISTANCES AND COORDINATES ARE IN METRES AND CAN BE
 CONVERTED TO FEET BY DIVIDING BY 0.3048.
 DISTANCES ARE GROUND AND CAN BE CONVERTED TO GRID BY
 MULTIPLYING BY THE COMBINED SCALE FACTOR OF 1.000253.

SURVEYOR'S CERTIFICATE
 I CERTIFY THAT:
 1. THIS SURVEY AND PLAN ARE CORRECT AND IN ACCORDANCE
 WITH THE SURVEYS ACT, THE SURVEYORS ACT, THE LAND
 TITLES ACT AND THE REGULATIONS MADE UNDER THEM.
 2. THE SURVEY WAS COMPLETED ON OCTOBER 7, 2024.

DRAFT

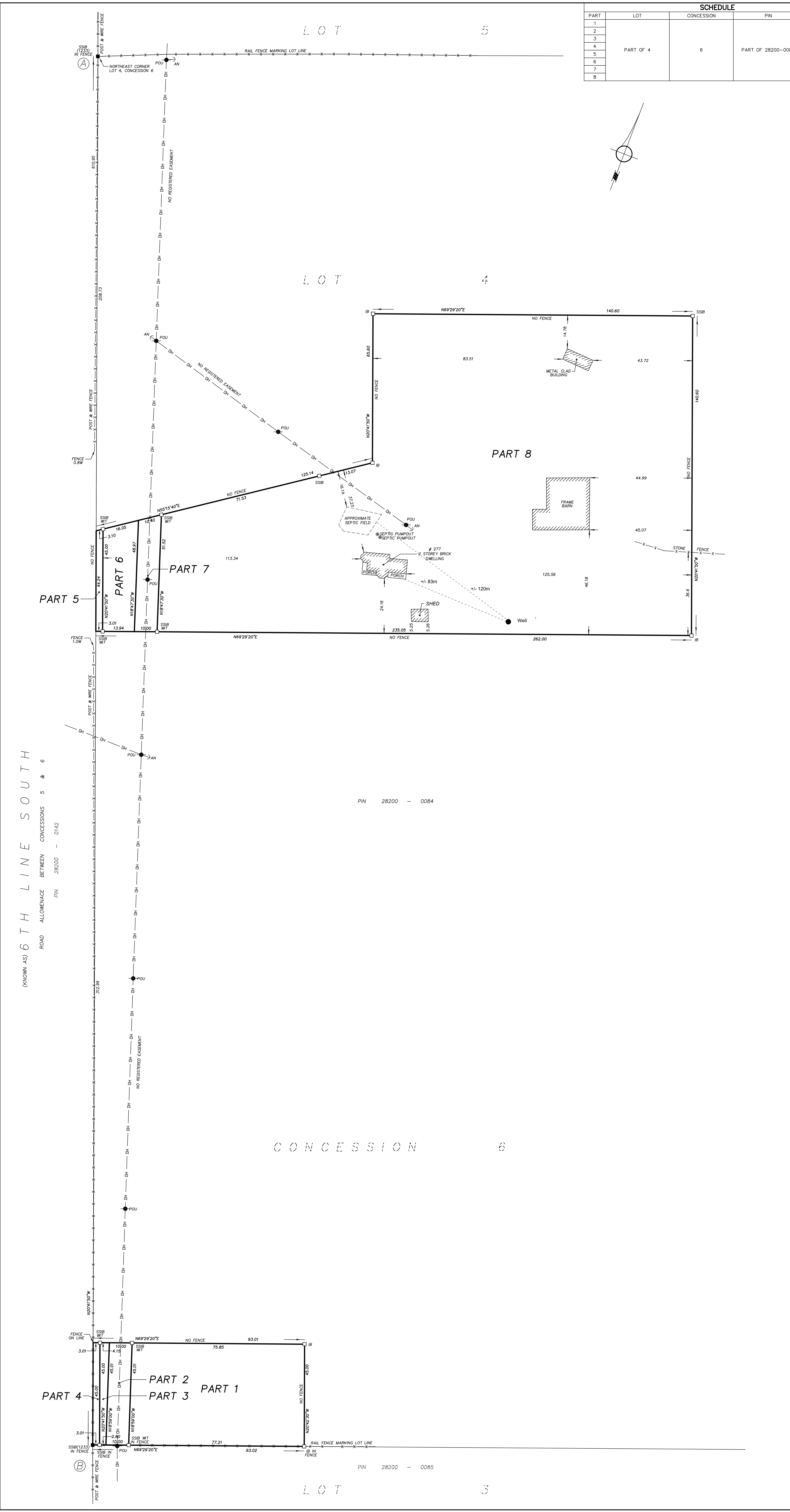
DATE SOPHIE CÔTÉ, O.L.S.

THIS PLAN OF SURVEY RELATES TO AOLS PLAN SUBMISSION FORM NUMBER V-*****

INTEGRATION DATA		
OBSERVED REFERENCE POINTS DERIVED FROM GPS OBSERVATIONS USING A REAL TIME NETWORK AND ARE REFERRED TO UTM ZONE 17 (81° WEST LONGITUDE) NAD83(CSR5)7(2010).		
RURAL ACCURACY PER SEC. 14(2), O.REG. 216/10.		
POINT ID	NORTHING	EASTING
A	4921454.75	735300.07
B	4920883.08	735518.06
CAUTION: COORDINATES CANNOT BE USED TO RE-ESTABLISH CORNERS OR BOUNDARIES SHOWN ON THIS PLAN.		



IBWSURVEYORS.COM | 1.800.667.0696
 copies available at Protect4ourBoundaries.ca
 PARTY CHIEFS (DRAWING CHECKED) DATE: OCT. 28, 2024
 FILE: A-050354-RPLAN_V2



(KNOWN AS) 6TH LINE SOUTH
 ROAD ALLOWANCE BETWEEN CONCESSIONS 5 & 6
 PIN 28200 - 0142

PIN 28200 - 0084

PIN 28200 - 0085

A-050354