

METRIC: DISTANCES AND COORDINATES SHOWN HEREON ARE IN METRES
CAN BE CONVERTED TO FEET BY DIVIDING BY 0.3048

SCHEDULE

PART	LOT	CONCESSION	PIN	AREA
1	PART OF THE ROAD ALLOWANCE	5 AND 6	PART OF PIN 28188-0052(LT)	537.4± sq.m.

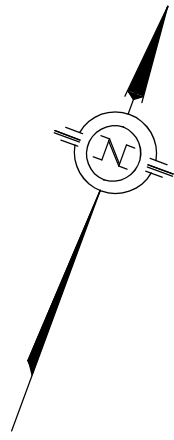
PLAN 45R-17746

Received and deposited

November 4th, 2024

Krystal Power

Representative for the
Land Registrar for the
Land Titles Division of
Peterborough (No.45)



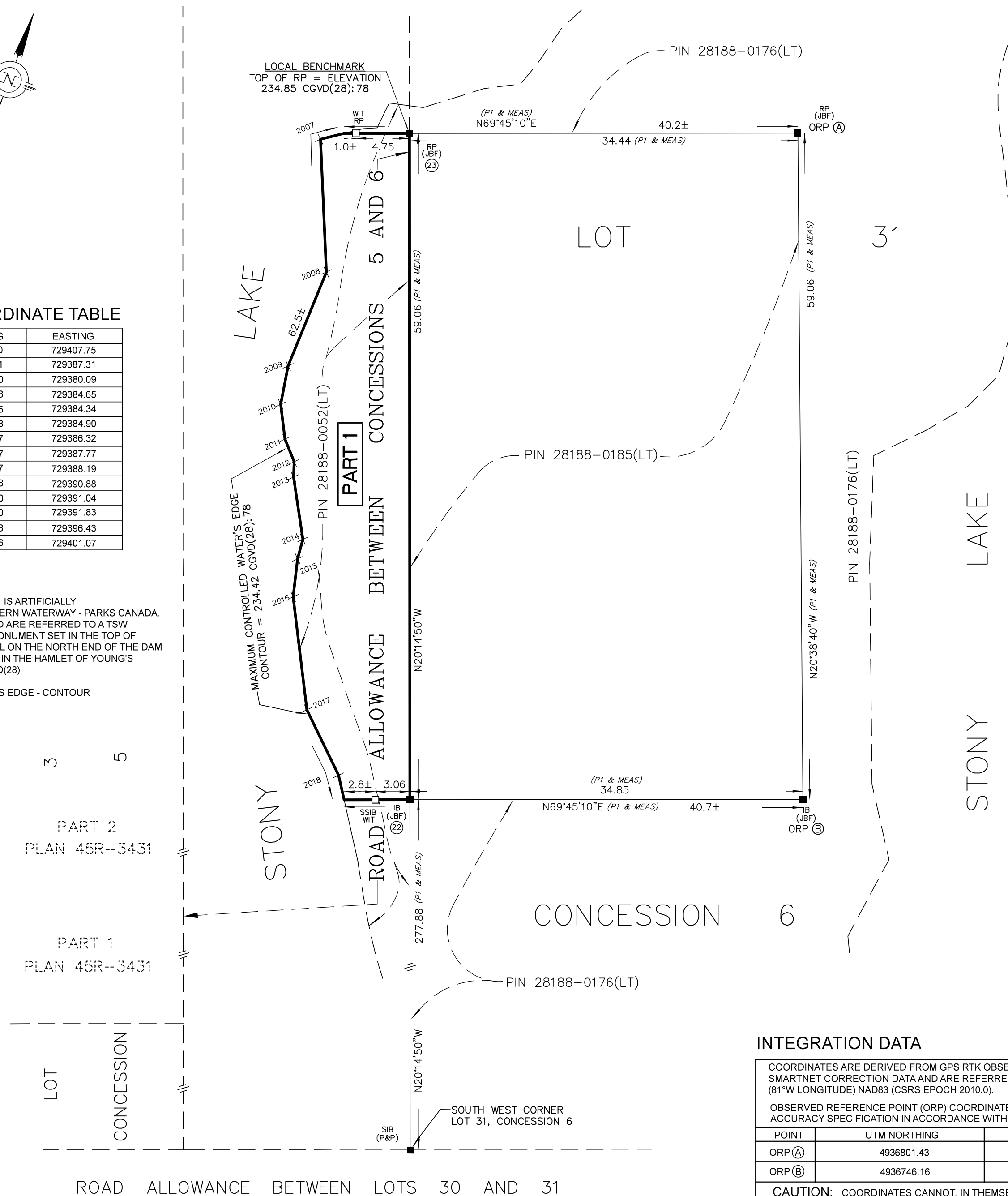
SHORELINE COORDINATE TABLE

POINT NUMBER	NORTHING	EASTING
22	4936734.10	729407.75
23	4936789.51	729387.31
2007	4936786.30	729380.09
2008	4936775.43	729384.65
2009	4936766.46	729384.34
2010	4936763.03	729384.90
2011	4936760.27	729386.32
2012	4936758.67	729387.77
2013	4936757.37	729388.19
2014	4936752.48	729390.88
2015	4936750.70	729391.04
2016	4936747.40	729391.83
2017	4936738.43	729396.43
2018	4936733.96	729401.07

STONY LAKE

THE ELEVATION OF STONY LAKE IS ARTIFICIALLY REGULATED BY THE TRENT SEVERN WATERWAY - PARKS CANADA. ELEVATIONS ARE GEODETIC AND ARE REFERRED TO A TSW BENCHMARK, BEING A BRASS MONUMENT SET IN THE TOP OF THE CONCRETE RETAINING WALL ON THE NORTH END OF THE DAM AT THE OUTLET OF CLEAR LAKE IN THE HAMLET OF YOUNG'S POINT. ELEVATION = 235.96 CGVD(28)

MAXIMUM CONTROLLED WATER'S EDGE - CONTOUR ELEVATION = 234.42 CGVD(28)



PLAN OF SURVEY OF
PART OF THE ROAD ALLOWANCE BETWEEN
CONCESSION 5 & 6
GEOGRAPHIC TOWNSHIP OF DUMMER
TOWNSHIP OF DOURO-DUMMER
COUNTY OF PETERBOROUGH



SCALE: 1:300

THE INTENDED PLOT SIZE OF THIS PLAN IS 560mm IN WIDTH BY 430mm IN HEIGHT WHEN PLOTTED AT A SCALE OF 1:300

SURVEYOR'S CERTIFICATE

I CERTIFY THAT:

- 1) THIS SURVEY AND PLAN ARE CORRECT AND ARE IN ACCORDANCE WITH THE SURVEYS ACT, THE SURVEYORS ACT AND THE LAND TITLES ACT AND THE REGULATIONS MADE UNDER THEM.
- 2) THE SURVEY WAS COMPLETED ON 4 OCTOBER, 2024

SIGNED AT LAKEFIELD, ONTARIO
THIS 7th DAY OF OCTOBER, 2024

CHRISTOPHER E. MUSCLOW
ONTARIO LAND SURVEYOR

THIS PLAN OF SURVEY IS RELATED TO AOLS PLAN
SUBMISSION FORM NUMBER V-62345.

LEGEND

- DENOTES SURVEY MONUMENT, FOUND
- DENOTES SURVEY MONUMENT, PLANTED
- WIT DENOTES WITNESS
- P&P DENOTES PIERCE & PIERCE, O.L.S.
- J&F DENOTES JBF SURVEYORS, O.L.S.
- P1 DENOTES PLAN OF SURVEY BY JBF SURVEYORS, O.L.S. DATED 29 AUGUST 2022.
- CGVD(28);78 DENOTES CANADIAN GEODETIC VERTICAL DATUM OF 1928:78

BEARINGS SHOWN HEREON ARE UTM GRID, DERIVED FROM REAL TIME NETWORK (RTN) OBSERVATIONS ON POINTS A AND B LISTED HEREON AND ARE REFERRED TO THE CENTRAL MERIDIAN OF UTM ZONE 17 (81° WEST LONGITUDE) NAD 83 (CSRS EPOCH 2010.0).

DISTANCES SHOWN HEREON ARE GROUND DISTANCES AND CAN BE USED TO COMPUTE GRID DISTANCES BY MULTIPLYING BY A COMBINED SCALE FACTOR OF 1.00021042

INTEGRATION DATA

COORDINATES ARE DERIVED FROM GPS RTK OBSERVATIONS USING THE SMARTNET CORRECTION DATA AND ARE REFERRED TO UTM ZONE 17 (81°W LONGITUDE) NAD83 (CSRS EPOCH 2010.0).

OBSERVED REFERENCE POINT (ORP) COORDINATE VALUES ARE TO 'REMOTE' ACCURACY SPECIFICATION IN ACCORDANCE WITH SEC. 14(2) OF O.REG. 216/10

POINT	UTM NORTHING	UTM EASTING
ORP (A)	4936801.43	729419.63
ORP (B)	4936746.16	729440.45

CAUTION: COORDINATES CANNOT, IN THEMSELVES, BE USED TO RE-ESTABLISH CORNERS OR BOUNDARIES SHOWN ON THIS PLAN.



JBF SURVEYORS
3177 LAKEFIELD ROAD., BOX 70
LAKEFIELD, ON K0L 2H0
PHONE: 705-652-6198
INFO@JBFSURVEYORS.COM
WWW.JBFSURVEYORS.COM

PROJ. # 9493