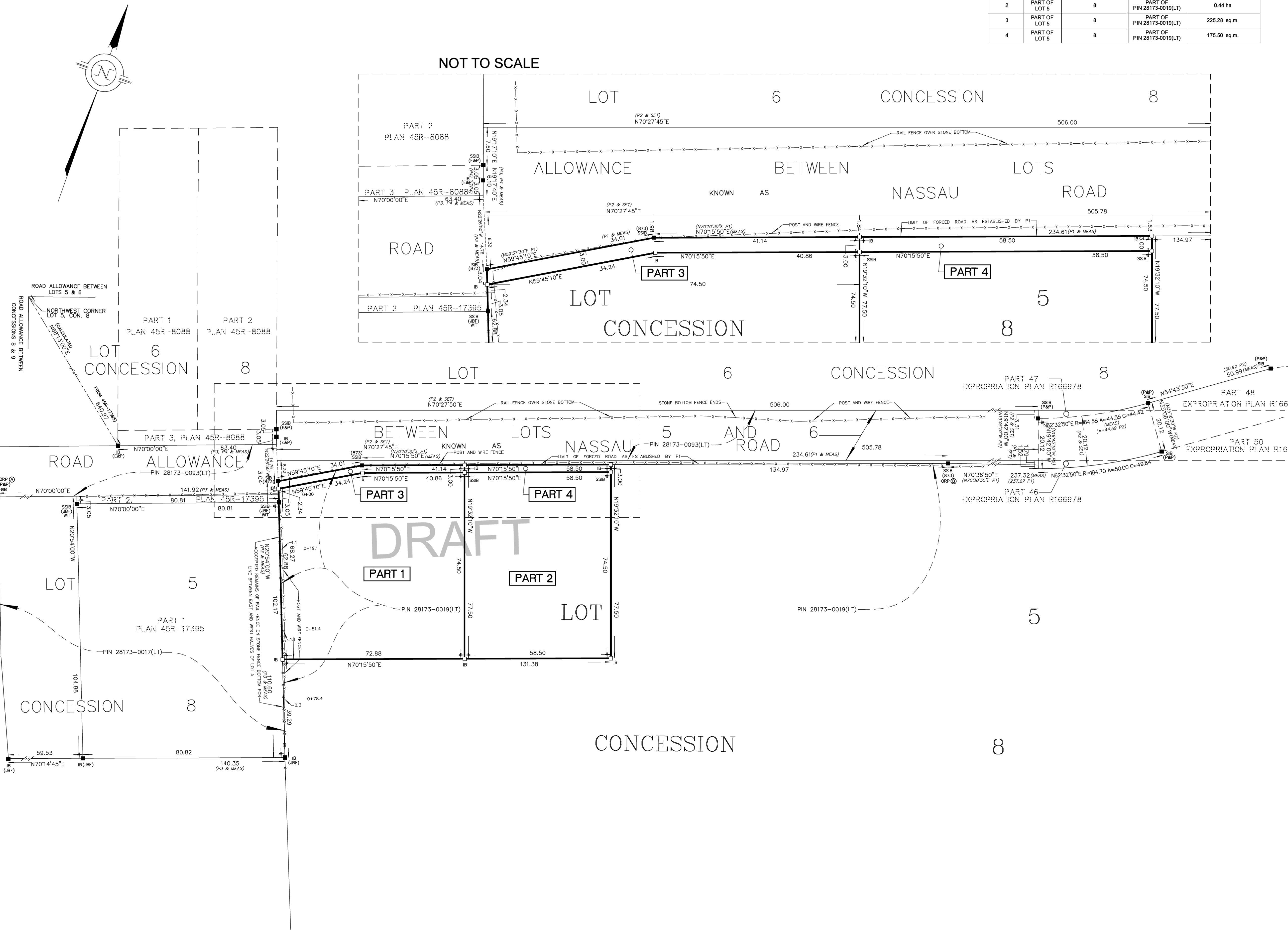


METRIC: DISTANCES AND COORDINATES SHOWN HEREON ARE IN METRES
CAN BE CONVERTED TO FEET BY DIVIDING BY 0.3048

SCHEDULE

PART	LOT	CONCESSION/PLAN	PIN	AREA
1	PART OF LOT 5	8	PART OF PIN 28173-0019(LT)	0.54 ha.
2	PART OF LOT 5	8	PART OF PIN 28173-0019(LT)	0.44 ha.
3	PART OF LOT 5	8	PART OF PIN 28173-0019(LT)	225.28 sq.m.
4	PART OF LOT 5	8	PART OF PIN 28173-0019(LT)	175.50 sq.m.

NOT TO SCALE



PLAN OF SURVEY OF
PART OF LOT 5
CONCESSION 8
GEOGRAPHIC TOWNSHIP OF DOURO
TOWNSHIP OF DOURO-DUMMER
COUNTY OF PETERBOROUGH



SCALE: 1:750
THE INTENDED PLOT SIZE OF THIS PLAN IS 860mm IN WIDTH BY 560mm IN HEIGHT
WHEN PLOTTED AT A SCALE OF 1:750

SURVEYOR'S CERTIFICATE

- I CERTIFY THAT:
- THIS SURVEY AND PLAN ARE CORRECT AND ARE IN ACCORDANCE WITH THE SURVEYS ACT, THE SURVEYORS ACT AND THE LAND TITLES ACT AND THE REGULATIONS MADE UNDER THEM.
 - THE SURVEY WAS COMPLETED ON XX XXXX, 2024

SIGNED AT LAKEFIELD, ONTARIO
THIS TH DAY OF MAY, 2024

CHRISTOPHER W. [Redacted]
ONTARIO LAND SURVEYOR

THIS PLAN OF SURVEY IS RELATED TO AOLS PLAN SUBMISSION FORM NUMBER V-62309.

LEGEND

- DENOTES SURVEY MONUMENT FOUND
- DENOTES SURVEY MONUMENT PLANTED
- WIT. DENOTES WITNESS
- P&L DENOTES PIERCE & LYONS, O.L.S.
- P&P DENOTES PIERCE & PIERCE, O.L.S.
- ESP DENOTES ELLIOTT & PARR, O.L.S.
- 873 DENOTES W.A. BENINGER, O.L.S.
- P1 DENOTES PLAN OF SURVEY BY W.A. BENINGER, O.L.S. DATED 11 MAY, 1970
- P2 DENOTES EXPROPRIATION PLAN R166978
- P3 DENOTES PLAN 45R-17395
- P4 DENOTES PLAN 45R-8088

BEARINGS SHOWN HEREON ARE UTM GRID, DERIVED FROM REAL TIME NETWORK (RTN) OBSERVATIONS ON POINTS A AND B LISTED HEREON AND ARE REFERRED TO THE CENTRAL MERIDIAN OF UTM ZONE 17 (81° WEST LONGITUDE) NAD 83 (CSRS EPOCH 2010.0).

FOR BEARING COMPARISONS, A ROTATION OF 2°00'30" COUNTER CLOCKWISE WAS APPLIED TO BEARINGS SHOWN ON P1 AND P2. A ROTATION OF 1°55'00" COUNTER CLOCKWISE WAS APPLIED TO BEARINGS SHOWN ON P4

DISTANCES SHOWN HEREON ARE GROUND DISTANCES AND CAN BE USED TO COMPUTE GRID DISTANCES BY MULTIPLYING BY A COMBINED SCALE FACTOR OF 1.00019638

INTEGRATION DATA

COORDINATES ARE DERIVED FROM GPS RTK OBSERVATIONS USING THE SMARTNET CORRECTION DATA AND ARE REFERRED TO UTM ZONE 17 (81°W LONGITUDE) NAD83 (CSRS EPOCH 2010.0).

OBSERVED REFERENCE POINT (ORP) COORDINATE VALUES ARE TO 'RURAL' ACCURACY SPECIFICATION IN ACCORDANCE WITH SEC. 14(2) OF O.REG. 216/10

POINT	UTM NORTHING	UTM EASTING
ORP (A)	4915745.84	719160.67
ORP (B)	4915895.74	719542.35

CAUTION: COORDINATES CANNOT, IN THEMSELVES, BE USED TO RE-ESTABLISH CORNERS OR BOUNDARIES SHOWN ON THIS PLAN.

JBF SURVEYORS
3177 LAKEFIELD ROAD, BOX 70
LAKEFIELD, ON K0L 2H0
PHONE: 705-652-6198
INFO@JBFSURVEYORS.COM
WWW.JBFSURVEYORS.COM
PROJ. # 9389_RP