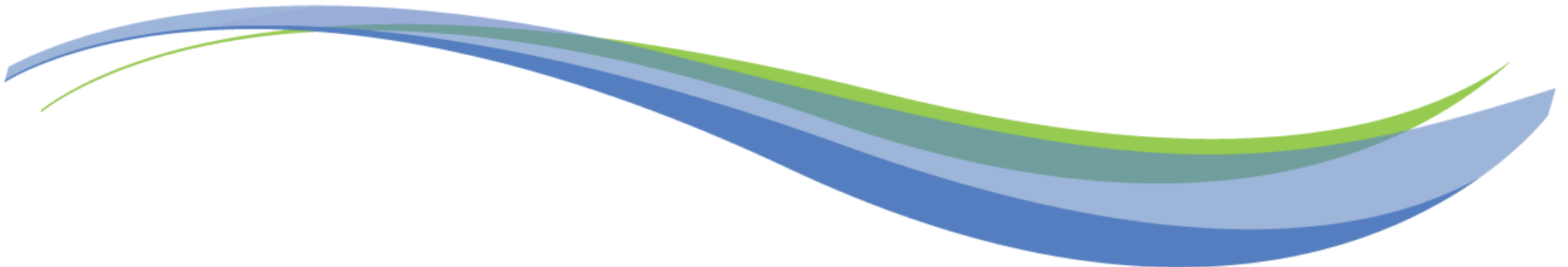




Otonabee
CONSERVATION

Township of Douro-Dummer

Tuesday, September 3, 2024



Otonabee Region Watershed

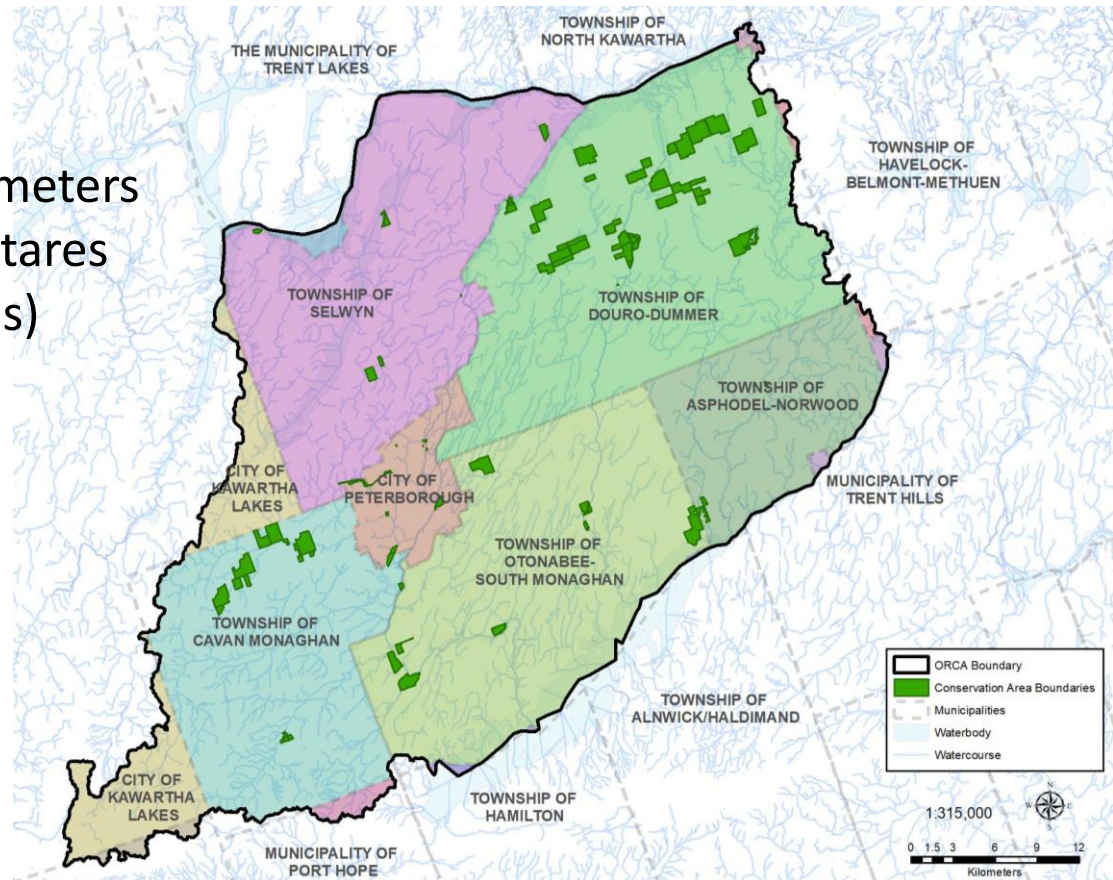
Jurisdiction -

Area: 1,951 square kilometers

Land base: 195,100 hectares
(482,100.669 acres)

Conservation Lands:

4,187 hectares
(10,346 acres)



Otonabee
CONSERVATION

Board of Directors

Township of Asphodel-Norwood

Township of Cavan Monaghan

Township of Douro-Dummer

Township of Otonabee-South Monaghan

Township of Selwyn

Municipality of Trent Hills

City of Kawartha Lakes

City of Peterborough

Patrick Wilford

Ryan Huntley

Adam Vervoort

Joe Taylor

Ron Black
John Boyko

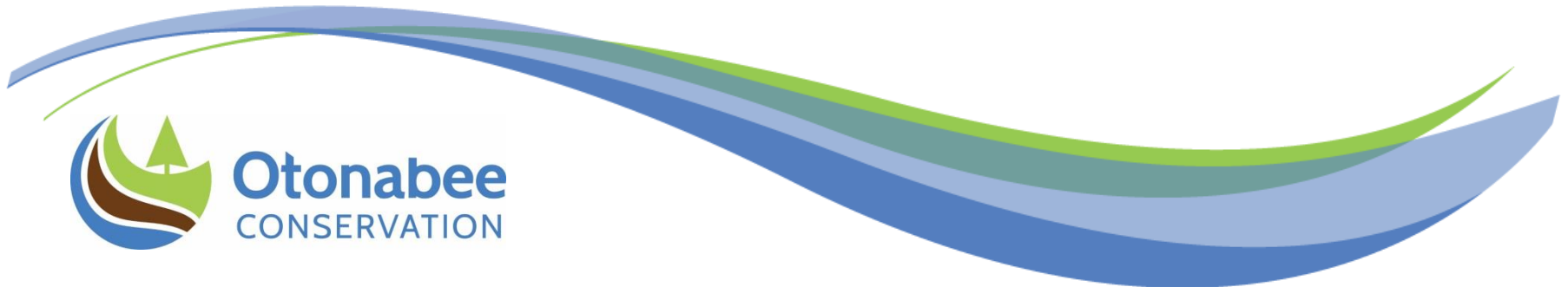
Michael Metcalf

Ron Ashmore

Kevin Duguay

Gary Baldwin

Don Vassiliadis



Legislation & Governance

Over the recent years there has been a significant number of updates and changes to the [Conservation Authorities Act](#) and the associated regulations and environmental registry.

- Bill 23 – *More Homes Build Faster Act* 2022
- O. Reg 686/21
- O. Reg 41/24
- Draft Conservation Lands Strategy



Subsection 9 (1) 1 of Ontario Regulations 686/21

2024-06-20



Board Report #: 2024-020
Appendix A
Page 3



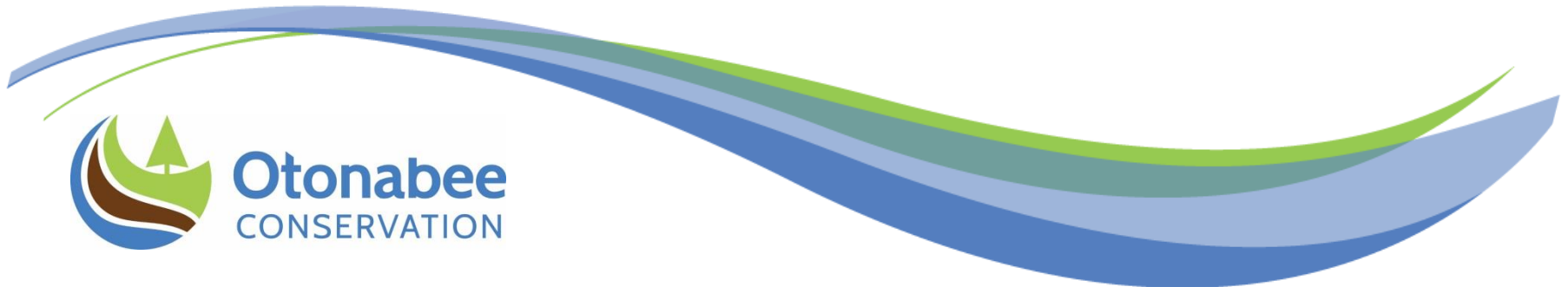
2023 Annual Report

Check out our interactive Annual Report in a storymap GIS format at

[2023 Annual Report | Otonabee Conservation \(arcgis.com\)](#)

Highlights:

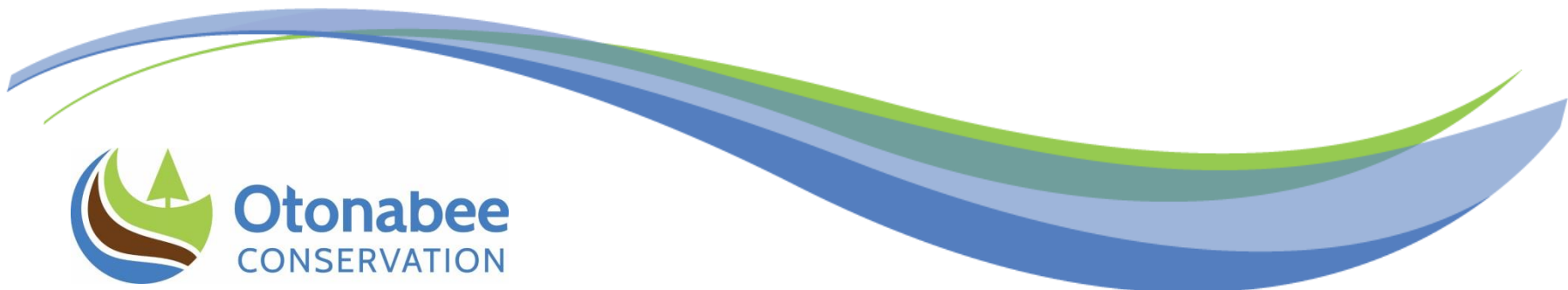
- 1033 trees were planted with 150 volunteers
- 12,078 tree seeding sold
- 1740 students participated in programs
- 391 permits issued
- 308 plan review
- 21 flood forecasting
- 13 snow surveys
- 8 Spring Water Awareness programs
- 25,000+ campers at 3 campgrounds



2024-2027 Strategic Plan



Otonabee
CONSERVATION



2024-2027 Strategic Plan

Our Vision: As guardians of our local water and natural environment, we promote resilience to change, foster community stewardship and provide outdoor recreational opportunities to support health living.

Our Values:

People First – residents, business, clients and staff are valued & listened to with an open mind.

Professionalism – our actions are reliable and trustworthy.

Collaborative- solutions-base teamwork is a keystone of our success.

Continuous Improvement-we strive to do our utmost & seek out opportunities to progress.

Fiscally Responsibility-being accountable & transparent in all we do.



Flood Management

- Flood Management:
 - **Prevention** through land use planning and regulation of development,
 - **Mitigation** through stewardship programs such as shoreline restoration
 - **Emergency Response** through flood forecasting & warning
- Understanding natural hazards such as floodplains are a core mandate or all conservation authorities
- [Regulated Areas Mapping \(arcgis.com\)](http://arcgis.com)



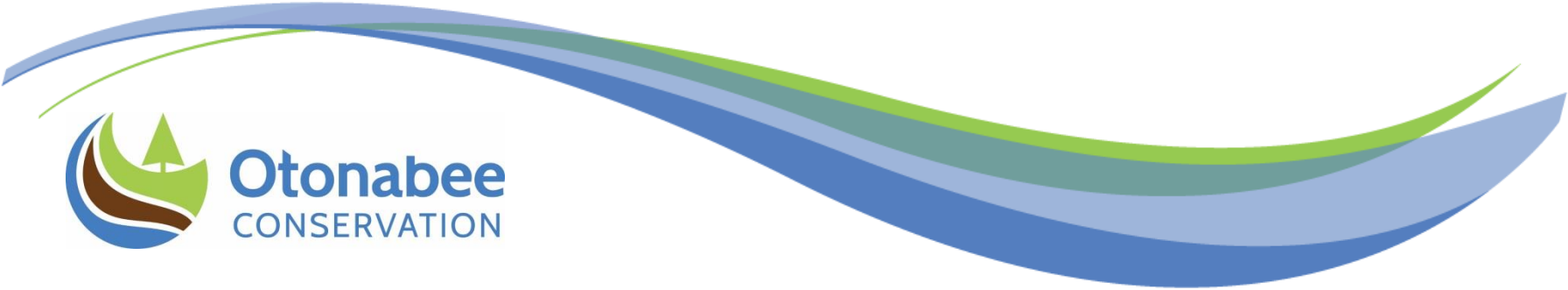
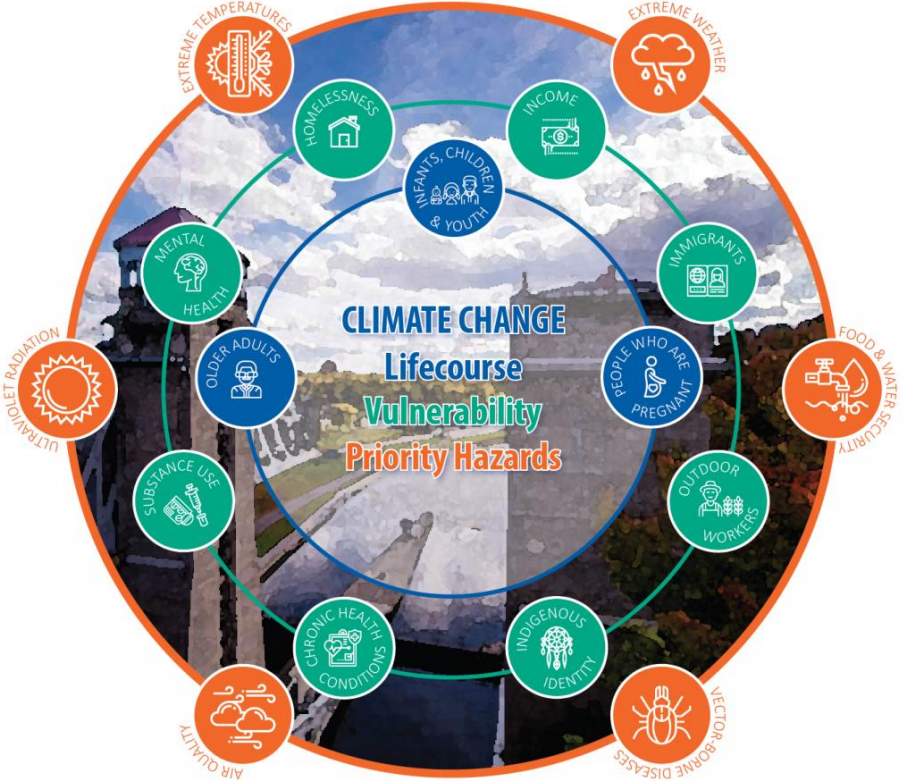
Climate Action

Climate Change Strategy



Climate change refers to changes in long-term weather patterns and natural variability due to human activity. Climate change can impact natural and human systems globally and locally.

Otonabee Conservation's programs support the adaptation and mitigation of climate change impacts in the Otonabee Region Watershed. This Climate Change Strategy articulates Otonabee Conservation's specific actions related to climate change.



Capital Campaigns



Otonabee
CONSERVATION

Capital Campaigns

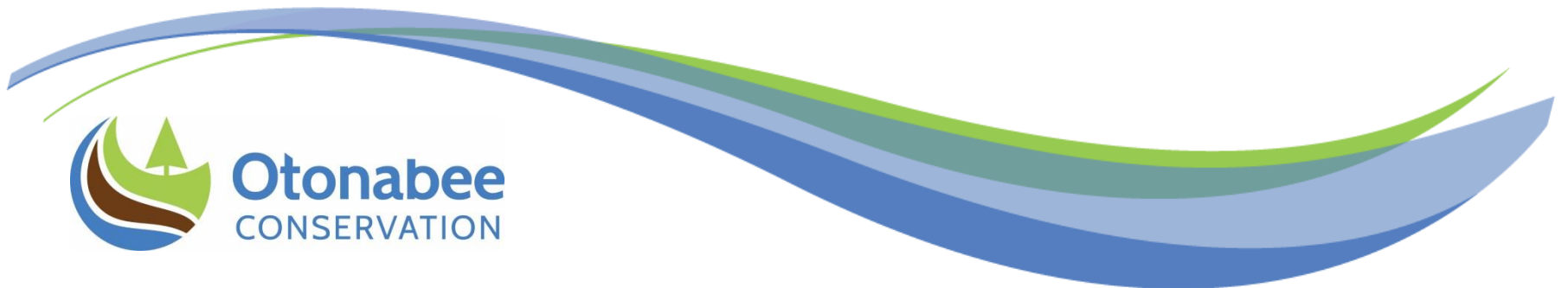
100 FOR HAROLD TOWN CAMPAIGN

This year for the giving season, we are raising funds to enhance [Harold Town Conservation Area](#). Help us enhance the property named after the famous Canadian artist, with habitat and trail enhancements, tree planting, new wayfinding and educational signs, and a new accessible trail! [Harold Town](#) would have been 100 next year! Let's celebrate by enhancing the Conservation Area named after him.



Otonabee
CONSERVATION

Thank You & Questions



Thank You

Otonabee Conservation's website
www.otonabeeconservation.com

