

METRIC: DISTANCES AND COORDINATES SHOWN HEREON ARE IN METRES  
CAN BE CONVERTED TO FEET BY DIVIDING BY 0.3048

LOT 16 CONCESSION 2

PLAN OF SURVEY OF  
PART OF LOT 16, CONCESSION 2  
GEOGRAPHIC TOWNSHIP OF DUMMER  
TOWNSHIP OF DOURO-DUMMER  
COUNTY OF PETERBOROUGH



SURVEYOR'S CERTIFICATE

- I CERTIFY THAT:
- THIS SURVEY AND PLAN ARE CORRECT AND ARE IN ACCORDANCE WITH THE SURVEYS ACT, THE SURVEYORS ACT AND THE LAND TITLES ACT AND THE REGULATIONS MADE UNDER THEM.
  - THE SURVEY WAS COMPLETED ON 23rd JUNE, 2023

SIGNED AT LAKEFIELD, ONTARIO  
THIS 10th DAY OF AUGUST, 2023

*Christopher E. Musclove*  
CHRISTOPHER E. MUSCLOVE  
ONTARIO LAND SURVEYOR  
THIS PLAN OF SURVEY IS RELATED TO AOLS PLAN  
SUBMISSION FORM NUMBER V-49753.

LEGEND

- DENOTES SURVEY MONUMENT FOUND
- DENOTES SURVEY MONUMENT PLANTED
- WT. DENOTES WITNESS
- 1456 DENOTES D.M. ROBERTSON, O.L.S.
- 873 DENOTES W.A. BENNINGER, O.L.S.
- P1 DENOTES PLAN 45R-7869
- P2 DENOTES PLAN 45R-4233
- P3 DENOTES PLAN 45R-7857

LINE TABLE

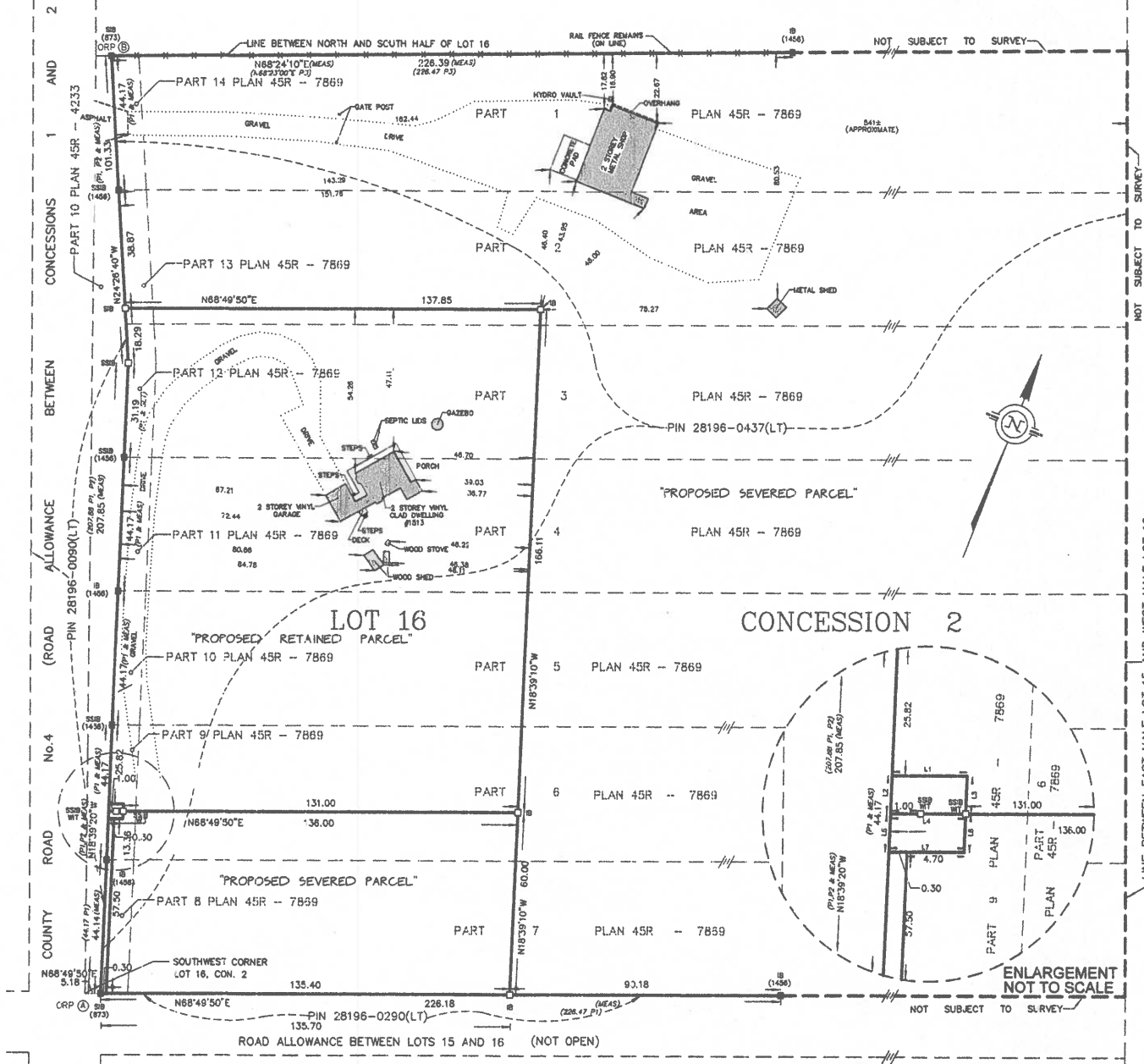
NUM	BEARING	DISTANCE
L1	N68°49'50"E	6.00
L2	N18°39'20"W	2.50
L3	N18°39'20"W	2.50
L4	N68°49'50"E	5.00
L5	N18°39'20"W	2.50
L6	N18°39'20"W	2.50
L7	N68°49'50"E	5.00

BEARINGS SHOWN HEREON ARE UTM GRID, DERIVED FROM REAL TIME NETWORK (RTN) OBSERVATIONS ON POINTS A AND B LISTED HEREON AND ARE REFERRED TO THE CENTRAL MERIDIAN OF UTM ZONE 17 (81° WEST LONGITUDE) NAD 83 (CSRS EPOCH 2010.0).

FOR BEARING COMPARISONS, A ROTATION OF 1°58'30" COUNTER CLOCKWISE WAS APPLIED TO BEARINGS SHOWN ON P1, P2 & P3

DISTANCES SHOWN HEREON ARE GROUND DISTANCES AND CAN BE USED TO COMPUTE GRID DISTANCES BY MULTIPLYING BY A COMBINED SCALE FACTOR OF 1.0018665

CONCESSION 2  
LOT 15  
LINE BETWEEN EAST HALF LOT 15 AND WEST HALF LOT 16



ENLARGEMENT  
NOT TO SCALE

INTEGRATION DATA

COORDINATES ARE DERIVED FROM GPS RTK OBSERVATIONS USING THE SMARTNET CORRECTION DATA AND ARE REFERRED TO UTM ZONE 17 (81°W LONGITUDE) NAD83 (CSRS EPOCH 2010.0).  
OBSERVED REFERENCE POINT (ORP) COORDINATE VALUES ARE TO 'RURAL' ACCURACY SPECIFICATION IN ACCORDANCE WITH SEC. 14(2) OF O.REG. 218/10

POINT	UTM NORTHING	UTM EASTING
ORP (A)	4825770.78	727692.40
ORP (B)	4926059.90	727584.00

CAUTION: COORDINATES CANNOT, IN THEMSELVES, BE USED TO RE-ESTABLISH CORNERS OR BOUNDARIES SHOWN ON THIS PLAN.

LOT 15

CONCESSION 2

NOTE: NO PERSON MAY COPY, REPRODUCE, DISTRIBUTE OR ALTER THIS PLAN IN WHOLE OR IN PART WITHOUT THE WRITTEN PERMISSION OF JBF SURVEYORS.

© JBF SURVEYORS 2023



JBF SURVEYORS  
3177 LAKEFIELD ROAD, BOX 70  
LAKEFIELD, ON K0L 2H0  
PHONE: 705-652-6188  
INFO@JBF.SURVEYORS.COM  
WWW.JBF.SURVEYORS.COM

PROJ. # 8814